

MED 520 PRO-ACTIVE

according to DIN 13277

Equipment

- Forced-air cooling
- 12 drawers
- Equipped with castors
- Automatic defrosting
- Comfortable access
- Key switch
- Condensate evaporation
- Potential-free contact
- Digital temperature Display
- Antifreeze
- Visual and audible alarm signal, even in the case of power failure
- Minimum/maximum temperature memory

**MADE IN
GERMANY**



Interior may differ visually

PRO-ACTIVE-Features

- Faster response time in the event of impending faults thanks to proactive alarms
- Data recording can be read out via USB interface using a USB stick and software
- Minimisation of temperature deviations in the interior
- Maximum storage safety thanks to harmonised components

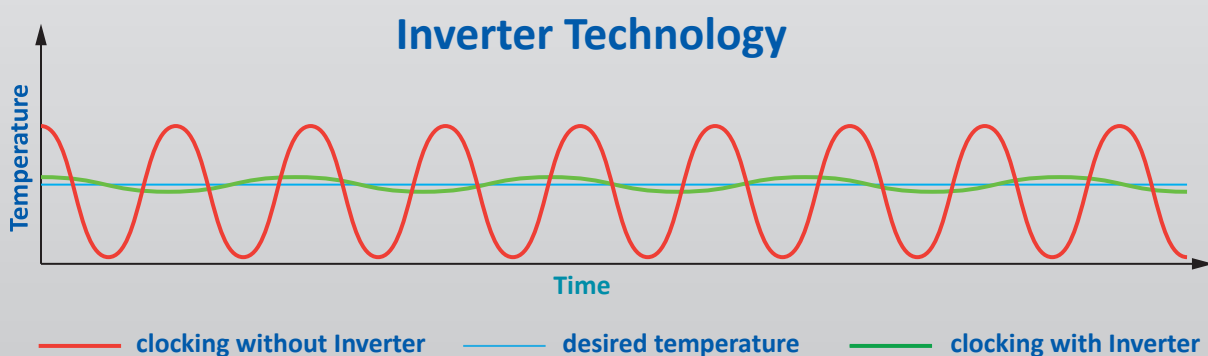


Compressor with inverter technology

- Environmentally friendly natural refrigerant R600a. Very low GWP value = 3 (Global Warming Potential)
- Reduction in power consumption by 45 % compared to the previous model (power consumption = 0.82 kWh/24h)
- Extended service life due to demand-orientated power adjustment
- Frequency: 50/60 Hz
- Low-noise operation

If you need further support or have any questions, please contact us.

info@kirsch-medical.de
+49 (0)781 - 9227 0



- **PRO-ACTIVE-Control:** Permanent, proactive monitoring of the performance data and alerts in the case of deviations. World's most accurate temperature control in refrigerated areas thanks to two standard PT-1000 sensors.
- **External housing** made from galvanised sheet steel (rustproof), with white, anti-scratch powder coating. Length of the plug cable: approx. 2.8 m.
- **Equipped with castors.**
- **Interior made from** smooth aluminium with colourless protective coating. Gibs (every 15 mm) for flexible interior arrangement.
- **Interior** can be customised (surcharge may apply). See optional equipment.
- **Extra-thick insulation**, made from high-quality, compression-moulded and environmentally friendly material. Energy saving.
- **Self-Closing Door** with easy-to-replace plastic magnetic seal frame, lockable.
- **Door hinge** on the right-hand side (by default, see illustration), or the left-hand side, can be retrofitted.
- **Forced-air cooling**, switches off automatically when you open the door, ensures a uniform temperature and minimizes temperature deviations.
- **Automatic fast defrosting** thanks to time-limited and temperature-monitored reversal of the refrigerant circuit.
- **Condensate evaporation** in stainless steel heated dish beneath the refrigerator floor.
- **Key switch** protected control panel against tampering. Membrane keyboard with digital temperature display and minimum/maximum temperature memory.
- **Warning functions** with visual and audible alarm signal in the case of temperature deviations or other malfunctions. Door open alarm after 60 seconds.
- **Power failure alarm** (visual and audible alarm), the monitoring unit remains in operation for approx. 30 hours on battery power.
- **Alarms** can be forwarded via email or SMS using the Kirsch EVOLUTION CLOUD Module (optional).
- **Data documentation** can be read via USB interface with KIRSCH Datanet software
- **Antifreeze** against sub-zero temperatures.
- **Ventilation-enforced refrigerating machine**, hermetically sealed, energy saving, low noise, easy to service.

Specification

Capacity	500 litres
Temperature setting	approx. +2 °C to +15 °C
Voltage	220 – 240 V, 50/60 Hz
Power consumption	66 watts
Normal consumption	0.82 kWh/24 h
Admissible ambient temperature	from +10 °C to +38 °C
Heat emission (max.)	554 watts
Exterior dimensions (including door handle and distance from wall)	w x d x h = 77 x 76 x 195.5 cm
Useable dimensions	w x d x h = 57.3 x 39 x 129 cm
Exterior dimensions with door open at 90°	w x d = 77 x 144 cm
Drawer inner dimensions	w x d x h = 57.3 x 39 x 5.6 cm
Max. load drawer	24 kg
Weight (net/gross)	145 kg/ 168 kg
Temperature deviation	+/-0.8 °C
Noise emission	47.1 dB(A)

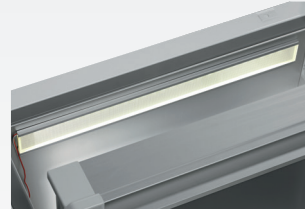
Optional equipment

KIRSCH refrigerators and freezers offer numerous equipment options that can be retrofitted.



Glass door with lock

Transparency: avoid opening the door unnecessarily to inspect the contents. Lockable.



interior lighting, side wall

Optional, optimal and energy-efficient lighting for the interior using an LED lightstrip.



Additional length and cross dividers

for the optimum organisation of your refrigerated goods.



Drawers on runners

Up to twelve drawers are possible in total.



Lockable drawer (top)

Protects special refrigerated goods from unauthorised access.



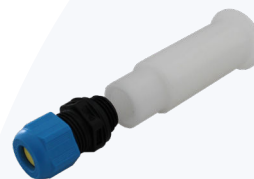
Additional Shelves

Wire shelves, robust with load capacity up to 40 and 50 kg.



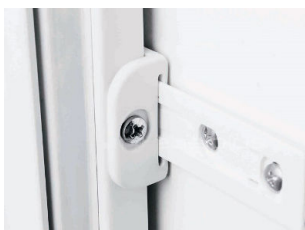
Vario Support

Storage shelf on roller runners.



Access Port

Simple insertion of an external temperature sensor with integrated cable feed-through.



Door coupling

Connects the furniture door to the device.



Levelling feet

Levelling feet instead of castors.



Condensation tray

for manual disposal of condensation water.



Decorative frame

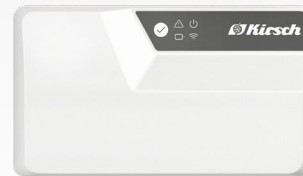
Made of stainless steel, allows to cover door with a decorative panel (thickness max. 2 mm).

Equipment for temperature documentation



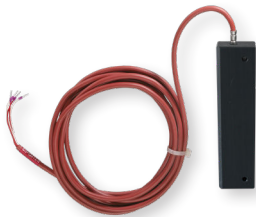
PC-KIT-NET

Automatic temperature documentation and monitoring via your network (LAN connection).



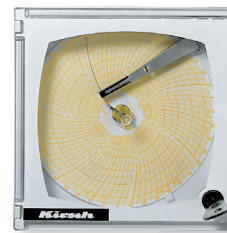
KIRSCH EVOLUTION CLOUD-Module

Maximum storage safety through optimal connectivity and real-time monitoring. *



External PT100/PT1000 with cold block

Additional temperature sensor for connection to existing/external monitoring system.



Circular blade temperature recorder

Depending on the model, it is either installed in the machine compartment panel of the unit or integrated into an additional housing attachment.

* For more information about our cloud, please contact us.

Philipp Kirsch GmbH
Im Lossenfeld 14
77731 Willstätt

Telefon: +49 (0) 781 9227-0
Telefax: +49 (0) 781 9227-200
info@kirsch-medical.de

www.kirsch-medical.com



You can find our complete product overview on our website:
www.kirsch-medical.com