

# MED 340 ULTIMATE

according to DIN 13277

## Equipment

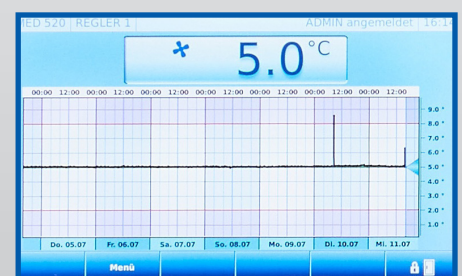
- Forced-air cooling
- 9 drawers
- Automatic defrosting
- Condensate evaporation
- Potential-free contact
- Antifreeze
- Visual and audible alarm signal, even in the event of a power failure
- Minimum/maximum temperature memory

**MADE IN  
GERMANY**



## ULTIMATE-Features

- Touch display, capacitive, elegant glass design
- Graphic display of the temperature curve with logbook function
- Access control via password entry or RFID possible
- PC-KIT-NET for temperature documentation and monitoring via LAN

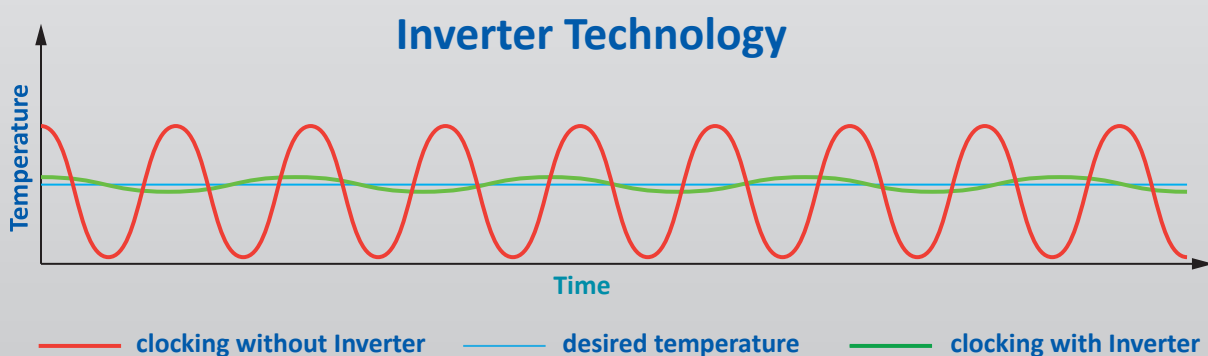


## Compressor with inverter technology

- Environmentally friendly natural refrigerant R600a. Very low GWP value = 3 (Global Warming Potential)
- Reduction in power consumption by 38 % compared to the previous model (power consumption = 0.51 kWh/24h)
- Extended service life due to demand-orientated power adjustment
- Frequency: 50/60 Hz

If you need further support or have any questions, please contact us.

**[info@kirsch-medical.de](mailto:info@kirsch-medical.de)**  
**+49 (0)781 - 9227 0**



- **PRO-ACTIVE-Control:** Permanent, proactive monitoring of the performance data and alerts in the case of deviations; world's most accurate temperature control in refrigerated areas thanks to two standard PT-1000 sensors.
- **Touch-Display,** elegant glass design, capacitive.
- **Access control** with protocol.
- **Graphical display** of the temperature curve and min/max temperature.
- **External housing** made from galvanised sheet steel (rustproof), with white, anti-scratch powder coating. Length of the plug cable: approx. 2.8 m.
- **Adjustable feet** positioned at the front to compensate uneven floors.
- **Interior made from** smooth aluminium with colourless protective coating. Gibs (every 15 mm) for flexible interior arrangement.
- **Interior** can be customised (surcharge may apply). See optional equipment.
- **Extra-thick insulation,** made from high-quality, compression-moulded and environmentally friendly material. Energy saving.
- **Self-Closing Door** with easy-to-replace plastic magnetic seal frame, lockable.
- **Door hinge** on the right-hand side (by default, see illustration), or the left-hand side, can be retrofitted.
- **Forced-air cooling,** switches off automatically when you open the door, ensures a uniform temperature and minimizes temperature deviations.
- **Automatic defrosting** with time limit and temperature monitoring.
- **Condensate evaporation** in the refrigerating machine interior.
- **Electronic temperature control,** tamper-proof by RFID/password with digital display and temperature memory.
- **Power failure alarm** (visual and audible alarm), the monitoring unit remains in operation for approx. 30 hours on battery power.
- **Warning functions** with visual and audible alarm signal in the case of temperature deviations or other malfunctions. Door open alarm after 60 seconds.
- **Alarms** can be forwarded via email or SMS using the Kirsch EVOLUTION CLOUD Module (optional).
- **Digital data documentation** readable via PC-KIT-NET or USB interface and software KIRSCH Datanet.
- **Antifreeze** against sub-zero temperatures.
- **Statically ventilated refrigerating machine,** hermetically sealed, energy saving, low noise, easy to service.

## Specification

Capacity	330 litres
Temperature setting	approx. +2 °C to +15 °C
Voltage	220 – 240 V, 50 and 60 Hz
Power consumption	39.9 watts
Normal consumption	0,51 kWh/24 h
Admissible ambient temperature	from +10 °C to +38 °C
Heat emission (max.)	202 watts
Exterior dimensions (including door handle and distance from wall)	w x d x h = 67 x 66 x 189 cm
Usable dimensions	w x d x h = 50.4 x 32 x 116 cm
Exterior dimensions with door open at 90°	w x d = 67 x 124 cm
Drawer inner dimensions	w x d x h = 50.4 x 32 x 5.6 cm
Max. load drawer	16 kg
Weight (net/gross)	100 kg/114 kg
Temperature deviation	+/-0.87 °C
Noise emission	39 dB(A)

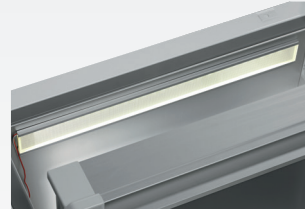
## Optional equipment

KIRSCH refrigerators and freezers offer numerous equipment options that can be retrofitted.



### Glass door with lock

Transparency: avoid opening the door unnecessarily to inspect the contents. Lockable.



### interior lighting, side wall

Optional, optimal and energy-efficient lighting for the interior using an LED lightstrip.



### Additional length and cross dividers

for the optimum organisation of your refrigerated goods.



### Drawers on runners

Up to twelve drawers are possible in total.



### Lockable drawer (top)

Protects special refrigerated goods from unauthorised access.



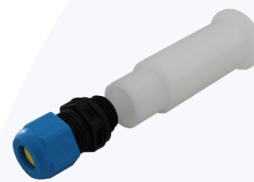
### Additional Shelves

Wire shelves, robust with load capacity up to 40 and 50 kg.



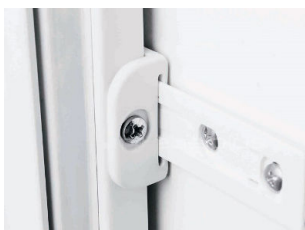
### Vario Support

Storage shelf on roller runners.



### Access Port

Simple insertion of an external temperature sensor with integrated cable feed-through.



### Door coupling

Connects the furniture door to the device.



### Castors

Can be equipped with steering and fixed castors.



**Condensation tray**

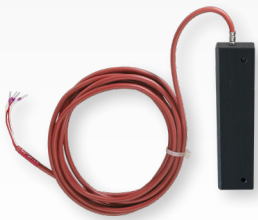
for manual disposal of condensation water.



**Decorative frame**

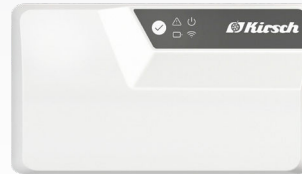
Made of stainless steel, allows to cover door with a decorative panel (thickness max. 2 mm).

Equipment for temperature documentation



**External PT100/PT1000 with cold block**

Additional temperature sensor for connection to existing/external monitoring system.



**KIRSCH EVOLUTION CLOUD-Module**

Maximum storage safety through optimal connectivity and real-time monitoring.\*

\* For more information about our cloud, please contact us.

**Philipp Kirsch GmbH**

Im Lossenfeld 14  
77731 Willstätt

Telefon: +49 (0) 781 9227-0  
Telefax: +49 (0) 781 9227-200  
info@kirsch-medical.de

[www.kirsch-medical.com](http://www.kirsch-medical.com)



You can find our complete product overview on our website:  
[www.kirsch-medical.com](http://www.kirsch-medical.com)