

# MED 200 PRO-ACTIVE

according to DIN 13277

## Equipment

- Key switch
- Forced-air cooling
- 4 drawers and 1 shelf
- Automatic defrosting
- Condensate evaporation
- Potential-free contact
- Digital temperature display
- Antifreeze
- Visual and audible alarm signal, even in the case of power failure
- Minimum/maximum temperature memory

**MADE IN  
GERMANY**



## PRO-ACTIVE-Features

- Faster response time in the event of impending faults thanks to proactive alarms
- Data recording can be read out via USB interface using a USB stick and software
- Minimisation of temperature deviations in the interior
- Maximum storage safety thanks to harmonised components

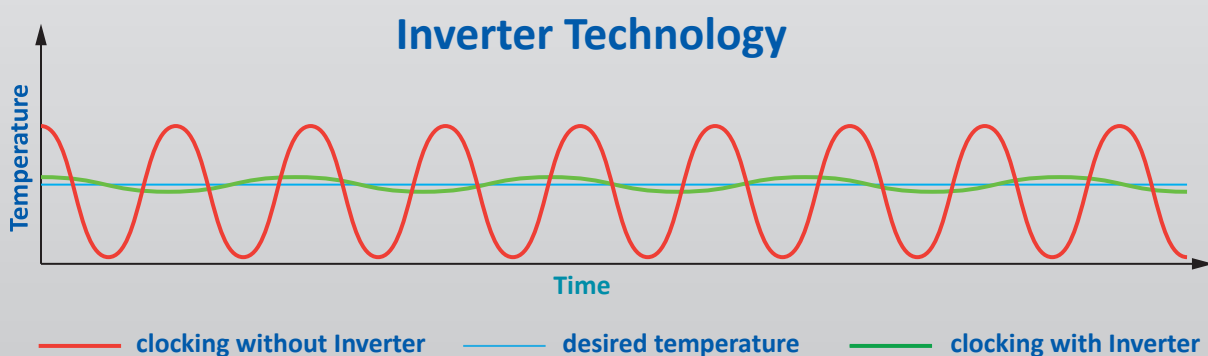


## Compressor with inverter technology

- Environmentally friendly natural refrigerant R600a. Very low GWP value = 3 (Global Warming Potential)
- Reduction in power consumption by 38 % compared to the previous model (power consumption = 0.53 kWh/24h)
- Extended service life due to demand-orientated power adjustment
- Frequency: 50/60 Hz
- Low noise operation

If you need further support or have any questions, please contact us.

[info@kirsch-medical.de](mailto:info@kirsch-medical.de)  
**+49 (0)781 - 9227 0**



- **PRO-ACTIVE-Control:** Permanent, proactive monitoring of the performance data and alerts in the case of deviations. World's most accurate temperature control in refrigerated areas thanks to two standard PT-1000 sensors.
- **External housing** made from galvanised steel sheet (rust protected), with white, scratch-proof powder coating. Plug cable length: approx. 2,8 m.
- **Adjustable feet** positioned at the front to compensate for uneven floors.
- **Interior made from** smooth aluminium with colourless protective coating. Gibs (15 mm increments) for flexible interior arrangement.
- **Interior** can be customised (surcharge may apply). See optional equipment.
- **Extra-thick insulation** made from high-quality, pressure-formed and environmentally friendly material. Energy saving.
- **Door** with easy-to-replace plastic magnetic seal frame, lockable.
- **Door hinge** can be switched from side to side (even retrospectively), right-hand side as standard across the series.
- **Forced-air cooling**, switches off automatically when you open the door, ensures a uniform temperature and reduces temperature reductions to a minimum.
- **Automatic defrost** with time limit and temperature monitoring.
- **Defrost water evaporation** in the refrigerating machine room.
- **Electronic temperature control** protected against tampering by means of key switches. Membrane keyboard with digital temperature display and minimum/maximum temperature memory.
- **Warning functions:** visual and audible alarm signal, even in the case of temperature deviations and power failure. Door open alarm after 60 seconds.
- **Alarms** can be forwarded via email or SMS using the Kirsch EVOLUTION CLOUD Module (optional).
- **Data documentation** can be read via USB interface with KIRSCH Datanet software.
- **Antifreeze** against sub-zero temperatures.
- **Ventilation-enforced refrigerating machine**, hermetically sealed, energy saving, low noise, easy to service. Inlet air and exhaust air flow through the ventilation slits at the front.

## Specification

Capacity	170 Liter
Temperature setting	+2 °C to +15 °C
Voltage	220 – 240 V, 50/60 Hz
Power Consumption	30 Watt
Normal Consumption	0,53 kWh/24 h
Admissible ambient temperature	from +10 °C to +38 °C
Heat emission (max.)	142 Watt
Overall dimensions (including distance from wall)	54 x 55.7 x 122 cm (w x d x h)
Usable dimensions	38 x 34 x 72 cm (w x d x h)
Exterior dimensions with door open at 90°	54 x 105 cm (w x d)
Shelf size	38 x 34 x 5.6 cm (w x d x h)
Max. load: drawer/shelf	13 kg/25 kg
Weight (net/gross)	69 kg/80 kg
Temperature deviation	+/-0.69 °C
Noise emission	48.75 dB(A)

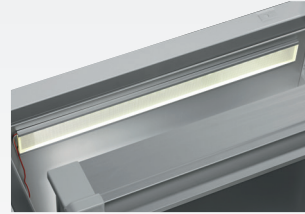
## Optional equipment

KIRSCH refrigerators and freezers offer numerous equipment options that can be retrofitted.



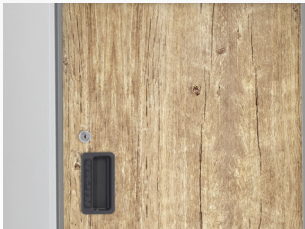
### Additional length and cross dividers

for the optimum organisation of your refrigerated goods.



### Interior lighting, ceiling

Optional, optimal and energy-efficient lighting for the interior using an LED lightstrip.



### Decorative frame

Made of stainless steel, allows to cover door with a decorative panel (thickness max. 2 mm).



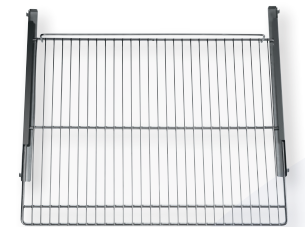
### Drawers on runners

Up to eight drawers are possible in total.



### Door coupling

Connects the furniture door to the device.



### Additional Shelves

Wire shelves, robust with load capacity up to 40 and 50 kg.



### Castors

Can be equipped with steering and fixed castors.



### Access Port

Simple insertion of an external temperature sensor with integrated cable feed-through.



### Condensation tray

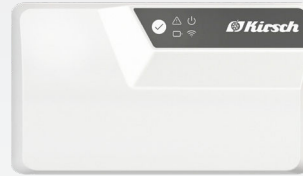
for manual disposal of condensation water.

## Equipment for temperature documentation



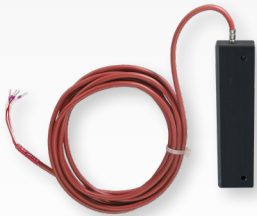
### PC-KIT-NET

Automatic temperature documentation and monitoring via your network (LAN connection).



### KIRSCH EVOLUTION CLOUD-Module

Maximum storage safety through optimal connectivity and real-time monitoring.\*



### External PT100/PT1000 with cold block

Additional temperature sensor for connection to existing/external monitoring system.



### Circular blade temperature recorder

Depending on the model, it is either installed in the machine compartment panel of the refrigerator or freezer or integrated into an additional housing attachment.

\* For more information about our cloud, please contact us.

### Philipp Kirsch GmbH

Im Lossenfeld 14  
77731 Willstätt

Telefon: +49 (0) 781 9227-0  
Telefax: +49 (0) 781 9227-200  
info@kirsch-medical.de

[www.kirsch-medical.com](http://www.kirsch-medical.com)



You can find our complete product overview on our website:  
[www.kirsch-medical.com](http://www.kirsch-medical.com)